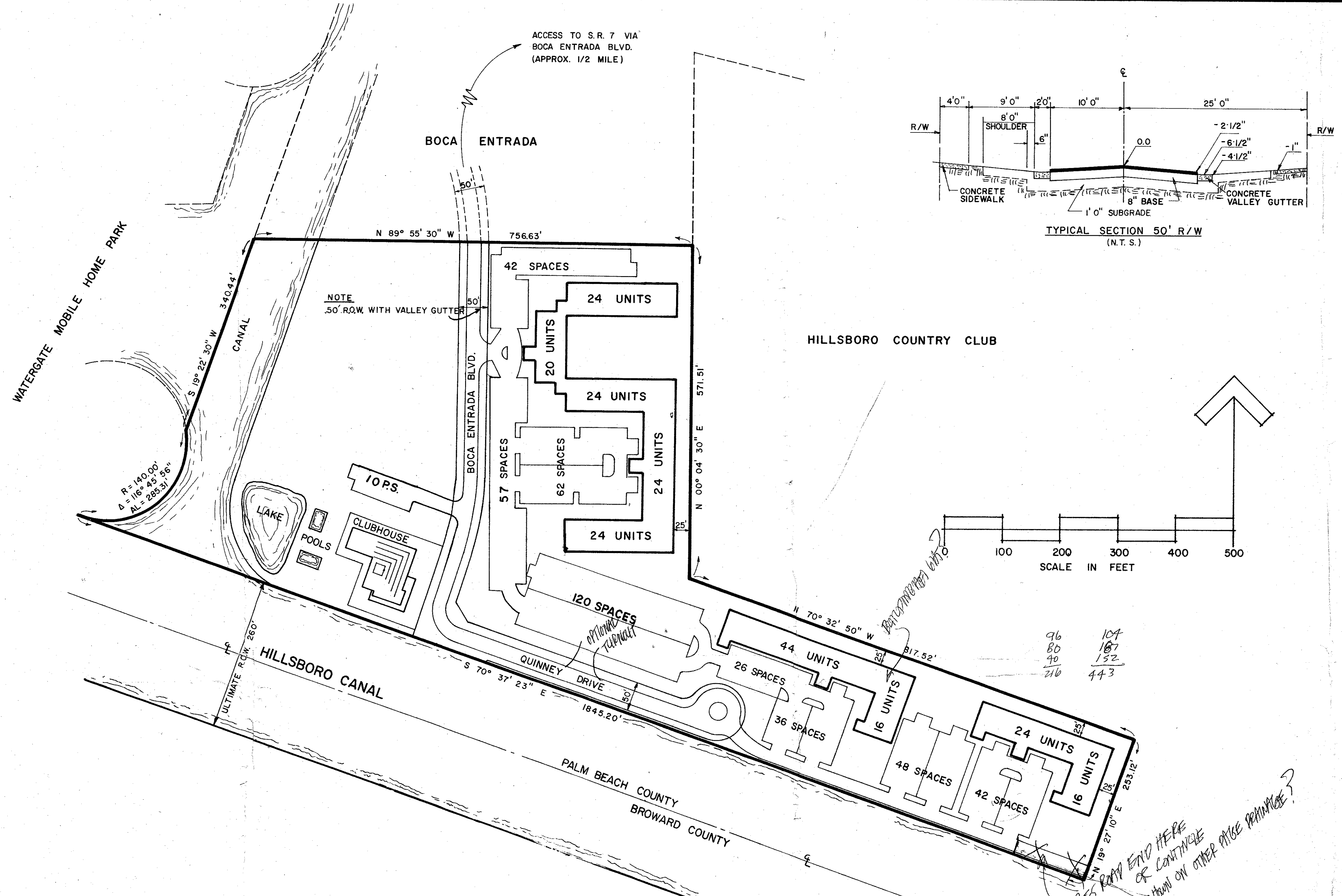
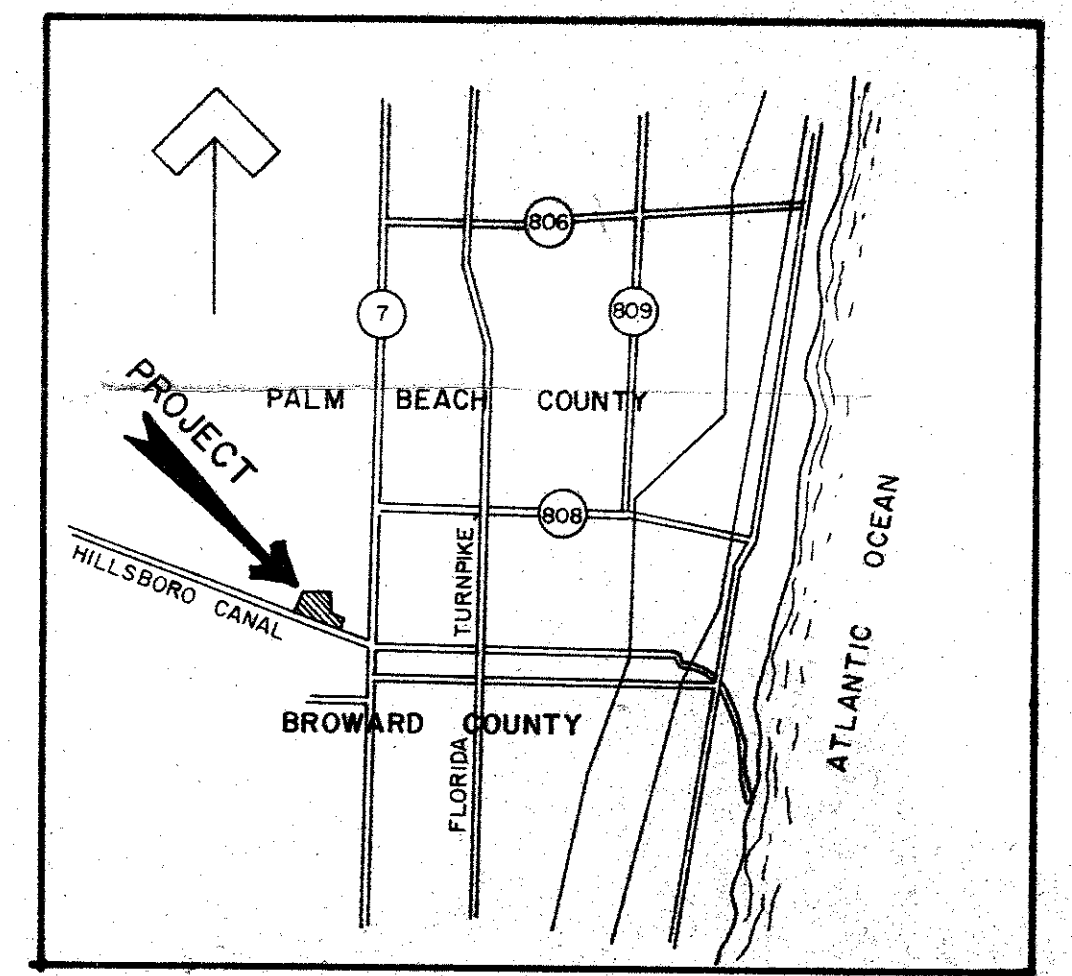


Revisions		
Date	Description	By
11-7-80	Reduced density	SHE



*- Access paved before 60% of completed areas  
- Unravel of access tract length*



VICINITY MAP  
(N. T. S.)

**LAND USE DATA**

BUILDING	2.2 Ac.	12.2 %
RECREATION	0.85	4.7
PUBLIC STREETS	1.49	8.3
PARKING & PRIVATE DRIVES	5.68	31.6
OPEN SPACE	6.06	33.6
WATER	1.73	9.6
<b>TOTAL</b>	<b>18.02 Ac.</b>	<b>100.0 %</b>

NOTE:  
ALL UTILITIES ARE AVAILABLE AND HAVE BEEN COORDINATED WITH THE REQUIRED UTILITY COMPANIES.

**SITE STATISTICS**

216 DWELLING UNITS  
443 PARKING SPACES  
11.9 D.U./Ac.  
ZONE CLASSIFICATION - RH

*Units/acre 19.3 max.  
Approval for road eng -  
Approval not for density/site plan.*

*\* THIS ROAD END HERE OR CONTINUE OR AS SHOWN ON OTHER PLANS PLEASE?*

96  
80  
90  
216  
104  
187  
152  
443

18  
28  
143

ur0256.igr  
BOCA ENTRADA III SITE PLAN

ENGINEER:  
ROBERT E. OWEN & ASSOCIATES  
P. O. BOX 3331  
WEST PALM BEACH, FLORIDA 33402  
(305) 689-6900

DEVELOPER:  
GORDON & GLUSMAN ENTERPRISES, INC.  
4701 SOUTHWEST 45th STREET  
FT. LAUDERDALE, FLORIDA 33314  
(305) 792-2388

Field Book No. Pg.	ROBERT E. OWEN & ASSOCIATES, INC. ENGINEERS · PLANNERS · SURVEYORS WEST PALM BEACH FLORIDA	BOCA ENTRADA PHASE III PALM BEACH COUNTY, FLORIDA GORDON & GLUSMAN SITE PLAN	Job No. 80-1114
Design			Scale 1" = 100'
Drawn W. C. LEEK			Date JULY, 1980
Checked			Sheet 1 of 1
Approved	Not to be used for Construction until Approved.		File No. D-3471-047